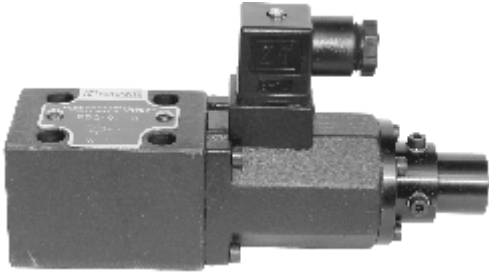


“EDG” Series Proportional Directly Operated Relief Valves

EDG series proportional directly operated relief valves can be used to control pressure in hydraulic systems with rapid response and high accuracy.



Ordering details

ED	G	01	H	10
Sort	Mounting type	Nominal size	Pressure adjustment range	Design code
Proportional directly operated relief valve	G:Subplate mounting	01	C~160bar H~250bar	10:With safety valve 11:Without safety valve

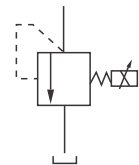
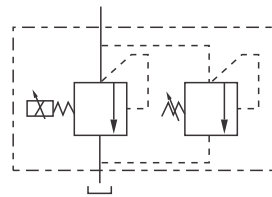
Technical specification

Model	EDG-01	
Max. working pressure (MPa)	25	
Max. flow rate (l/min)	2	
Min. flow rate (l/min)	0.3	
Pressure adjustment range (bar)	2 ~ 160	3 ~ 250
Rated current (mA)	900	950
Coil resistance (Ω)	10	
Hysteresis	<3%	
Repeatability	1%	
Weight(kgs)	2	

Symbol

With safety valve

Without safety valve



Dimensions

Unit: mm

EDG-01- * -11

EDG-01- * -10

