

“EFBG” Series Proportional Pressure and Flow Control Valves

EFBG series proportional pressure and flow control valves adopt two electrical loops to control pressure and flow of hydraulic system respectively. Using very small pressure drop to track load pressure and control the pump pressure, it is an energy-saving valve.



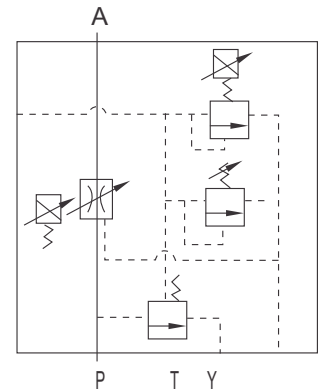
Ordering details

EFB	G	03	125	H	10
Sort	Mounting type	Nominal size	Max. flow	Pressure adjustment range	Design code
Proportional pressure and flow control valve	G:Subplate mounting	03:NG10	125l/min	C:8~140bar H:10~210bar	10

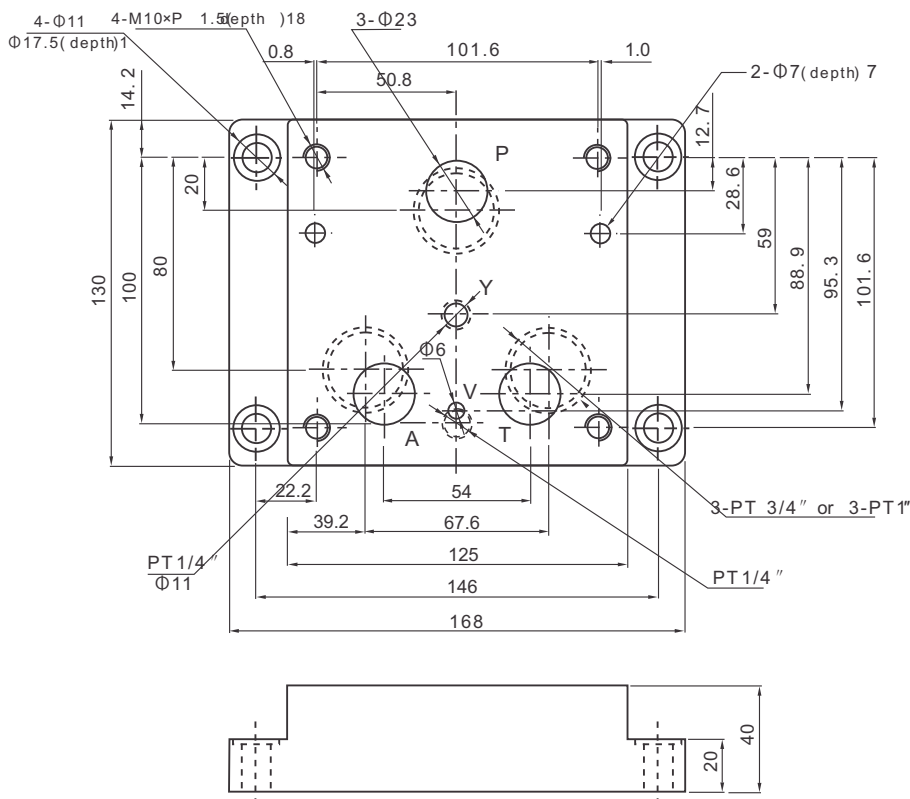
Technical specification

Model	EFBG-03 (flow control)	EFBG-03 (pressure control)	
Flow and pressure adjustment range	1-125l/min	8~140bar	10~210bar
Rated current (mA)	750	780	820
1.Inner pressure loss 2.allowable backpressure	1: 5bar	2: <5bar	
Coil resistance (Ω)	40	10	
Hysteresis	<7%	<3%	
Repeatability	1%		
Weight(kgs)	18		

Symbol



Mounting size



Unit: mm

Dimensions

Unit: mm

