

ORDERING CODE - S67DB SERIES

S67DB W - B42 - B07 1 R 00 - S 1 M1

Series- SAE C 2 bolts
Mounting flange J744c

severe duty shaft only

Cam ring for "P1"
Volumetric displacement cm³/rev (in³/rev)

B14 = 47.6 (2.90)	B35 = 111.0 (6.77)
B17 = 58.2 (3.55)	B38 = 120.3 (7.34)
B20 = 66.0 (4.03)	B42 = 136.0 (8.30)
B24 = 79.5 (4.85)	B45 = 145.7 (8.89)
B28 = 89.7 (5.47)	B50 = 158.0 (9.64)
B31 = 98.3 (6.00)	B61 = 190.5 (11.62)

Cam ring for "P2"
Volumetric displacement cm³/rev (in³/rev)

B02 = 5.7 (0.35)	B09 = 28.0 (1.71)
B03 = 9.8 (0.60)	B10 = 31.8 (1.94)
B04 = 12.8 (0.78)	B11 = 34.9 (2.13)
B05 = 15.9 (0.97)	B12 = 40.9 (2.50)
B06 = 19.8 (1.21)	B14 = 45.1 (2.75)
B07 = 22.5 (1.37)	B15 = 50.0 (3.05)
B08 = 24.9 (1.52)	

Mounting W/connection variables

P1=11"	P2=3/4"	S=3"
UNC	METRIC	
11	M1	

Seal class
1 - S1 (for mineral oil)
4 - S4 (for fire resistant fluids)
5 - S5 (for mineral oil and fire resistant fluids)

Design letter

Porting combination
00 - standard

Direction of rotation (view on shaft end)
R - clockwise
L - counter-clockwise

Severe duty (VT67DBW only)
5 - keyed (no SAE)

Type of shaft
1 - keyed (SAE C)
2 - keyed (no SAE)
3 - splined (SAE C)
4 - splined (no SAE)

OPERATING CHARACTERISTICS - TYPICAL (24 cST) (Input powerp (KW) for one cartridge only)

Pressure port	Series	Volumetric Displacement Vp		Flow q & n = 1800 rpm						Input power p & n = 1800 rpm					
				p = 0 bar (0 psi)		p = 140 bar (2000 psi)		p = 240 bar (3500 psi)		p = 7 bar (100 psi)		p = 140 bar (2000 psi)		p = 240 bar (3500 psi)	
				in ³ /rev	cm ³ /rev	gpm	lpm	gpm	lpm	gpm	lpm	hp	kw	hp	kw
P1	014	2.90	47.6	22.64	85.0	20.46	77.4	18.8	71.1	4.02	2.99	29.31	21.85	49.34	36.79
	017	3.55	58.2	23.1	87.3	20.6	78.0	18.99	71.8	3.35	2.5	29.77	22.2	49.62	37.0
	020	4.03	66.0	31.39	118.6	29.29	101.4	27.57	104.2	4.53	3.38	39.52	29.47	67.21	50.11
	024	4.85	79.5	37.81	142.8	35.63	134.6	33.99	128.5	4.91	3.66	47.02	35.06	80.32	59.89
	028	5.47	89.7	42.66	161.3	40.48	153.0	38.84	146.8	5.19	3.87	52.68	39.28	90.23	67.28
	031	6.00	98.3	46.75	176.7	44.57	168.5	42.93	162.3	5.43	4.09	57.45	42.84	98.58	73.51
	035	6.77	111.0	52.79	199.6	50.61	191.3	48.97	184.1	5.78	4.31	64.50	48.09	110.91	82.70
	038	7.34	120.3	57.21	216.3	55.03	208.1	53.39	201.8	6.04	4.50	69.66	51.94	111.94	83.47
	042 ¹⁾	8.30	136.0	64.68	244.5	62.50	236.3	60.86	230.1	6.47	4.83	78.37	58.44	135.19	100.81
	045 ¹⁾	8.89	145.7	69.29	261.9	67.11	253.7	65.47	247.5	6.74	5.02	83.75	62.45	144.61	107.83
	050 ¹⁾	9.64	158.0	75.14	284.1	72.96	275.8	-	-	7.08	5.27	90.58	67.54	-	-
061 ¹⁾	11.62	190.4	75.6	285.8	73.54 ³⁾	278.0 ³⁾	-	-	7.37	5.50	97.49 ³⁾	72.69 ³⁾	-	-	
				p = 0 bar (0 psi)	p = 140 bar (2000 psi)	p = 300 bar (4350 psi)	p = 7 bar (100 psi)	p = 140 bar (2000 psi)	p = 300 bar (4350 psi)						
P2	B02	0.35	5.8	2.76	10.4	2.33	8.8	1.80	6.8	0.74	0.55	4.02	2.99	8.10	6.40
	B03	0.60	9.8	4.66	17.6	4.23	15.9	3.70	14.0	0.85	0.63	6.24	4.65	12.93	10.25
	B04	0.78	12.8	6.09	23.0	5.66	21.4	5.13	19.4	0.94	0.70	7.90	5.89	16.55	13.13
	B05	0.97	15.9	7.56	28.6	7.13	26.9	6.60	25.0	1.02	0.76	9.62	7.17	20.29	16.12
	B06	1.21	19.8	9.42	35.6	8.99	33.9	8.46	32.0	1.13	0.84	11.79	8.79	25.00	19.88
	B07	1.37	22.5	10.70	40.4	10.27	38.8	9.74	36.8	1.20	0.89	13.29	9.91	28.26	22.47
	B08	1.52	24.9	11.84	44.7	11.41	43.1	10.88	41.1	1.27	0.94	14.62	10.90	31.15	24.78
	B09	1.71	28.0	13.31	50.3	12.87	48.6	12.35	47.0	1.36	1.01	16.35	12.19	34.92	27.77
	B10	1.94	31.8	15.12	57.2	14.69	55.5	14.16	53.5	1.46	1.11	18.45	13.75	39.48	31.42
	B11	2.13	34.9	16.64	62.9	16.19	61.2	15.68	59.3	1.55	1.15	20.17	15.04	43.22	32.22
	B12	2.50	40.9	19.50	73.7	19.07	72.1	18.54	70.1	1.72	1.28	23.55	17.56	50.58	37.71
	B14	2.75	45.1	21.40	80.8	20.95	79.2	20.44	77.0	1.83	1.36	25.80	19.23	55.48	41.37
	B15	3.05	50.0	23.78	89.8	23.35	88.3	22.88 ⁴⁾	86.5 ⁴⁾	1.97	1.47	28.55	21.28	-	-

1) 042-045-050-061=2200 RPM max.

2) 050=210 bar (3000 psi) max.

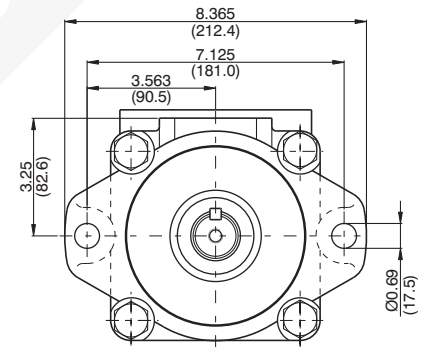
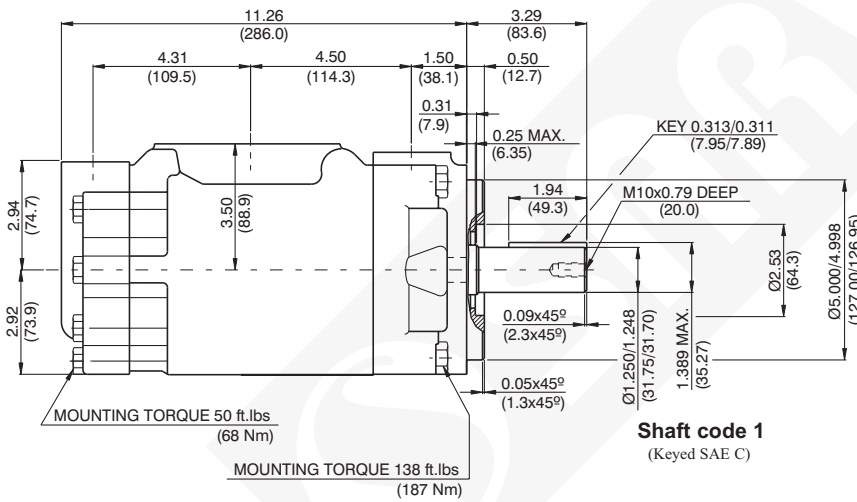
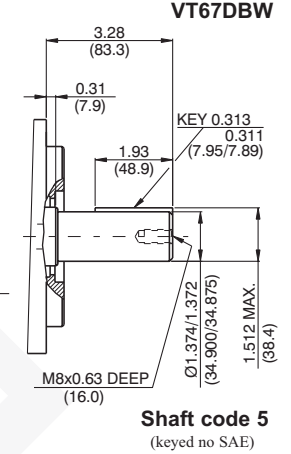
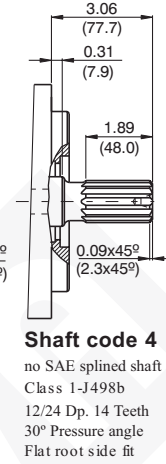
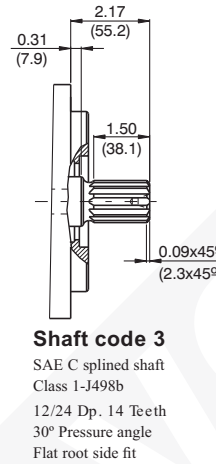
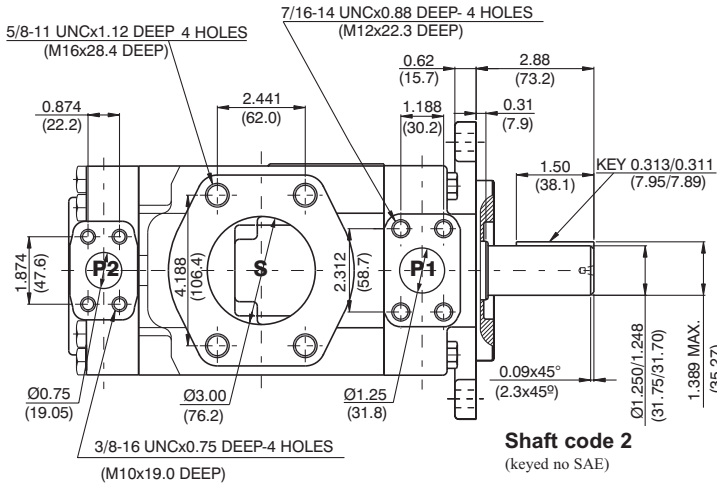
3) 061 = 120 bar (1740 psi) max. int, 061 = 80 bar (1160 psi) cont.

4) B15 = 280 bar (4060 psi) max. int

P1 Side - B14-B38 Peak Pressure 270 bar
P2 Side - B02-B10 Peak Pressure 350 bar

DIMENSIONS - S67DB SERIES

WEIGHT : 36.7 Kg.



Shaft torque limits in ³ /revxpsi(ml/revxbar)	
Shaft	Vp x p max. (P1+P2)
1	38299 (43240)
2	30638 (34590)
3	54207 (61200)
4	54207 (61200)
5	49247 (55600)

Porting Diagrams

