



SARVA HYDRAULIK LLC

ORDERING CODE - S6EE / S6EES SERIES

S6EE / S6EES - 066 - 045 - 1 R 00 - S 1 0 - 00

Series

S6EE Series - 250 B4HW
ISO 3019-2 mounting flange

S6EES Series - SAE 4 bolts
Mounting flange J744c

Cam ring for "P1" & "P2"

Volumetric displacement cm³/rev (in³/rev)

042 = 132.3 (8.07)
045 = 142.4 (8.69)
050 = 158.5 (9.67)
052 = 164.8 (10.06)
057 = 180.7 (11.02)
062 = 196.7 (12.00)
066 = 213.3 (13.02)
072 = 227.1 (13.86)
085 = 269.8 (16.46)

Type of Shaft S6EE

2 - Keyed (G45N ISO 3019-2)

S6EES

1 - Keyed (SAE CC)

Port connection variables
SAE 4 bolt flange (J518c)

	UNC	METRIC
S6EE	00	M0
S6EES	00	M0

Coupling adaptor

0 - None
2 - SAE B
3 - SAE BB

Seal class

1 - S1 (for mineral oil)
4 - S4 (for fire resistant fluids)
5 - S5 (for mineral oil and fire resistant fluids)

Design letter

Porting combination

00 = Standard

Direction of rotation (View on shaft end)

R - Clockwise
L - Counter - clockwise

OPERATING CHARACTERISTICS - TYPICAL (24 cST) (Input power p (KW) for one cartridge only)

Pressure port	Series	Volumetric Displacement V _p		Flow q & n = 1500 rpm						Input power p & n = 1500 rpm					
				p = 0 bar (0 psi)		p = 140 bar (2000 psi)		p = 240 bar (3500 psi)		p = 7 bar (100 psi)		p = 140 bar (2000 psi)		p = 240 bar (3500 psi)	
		in ³ /rev	cm ³ /rev	gpm	lpm	gpm	lpm	gpm	lpm	hp	kw	hp	kw	hp	kw
P1 & P2	042	8.07	132.3	52.50	198.5	49.87	188.5	47.96	181.3	6.97	5.2	66.25	49.4	110.77	82.6
	045	8.70	142.4	56.51	213.6	53.86	203.6	51.98	196.5	7.24	5.4	70.94	52.9	118.95	88.7
	050	9.67	158.5	62.88	237.7	60.24	227.7	58.36	220.6	7.64	5.7	78.45	58.5	131.82	98.3
	052	10.00	164.8	65.40	247.2	62.75	237.2	60.87	230.1	7.78	5.8	81.53	60.8	136.92	102.1
	057	11.02	180.7	71.71	271.1	69.07	261.1	67.19	254.0	8.18	6.1	89.04	66.4	143.35	106.9
	062	12.00	196.7	78.04	295.0	75.40	285.0	73.52	277.9	8.58	6.4	96.42	71.9	162.67	121.3
	066	13.00	213.3	84.63	319.9	81.98	309.9	80.11	302.8	8.98	6.7	104.20	77.7	175.94	131.2
	072	13.86	227.1	90.11	340.6	87.46	330.6	-	-	9.25	6.9	110.77	82.6	-	-
	085 ^{1,2)}	16.40	269.8	107.00	404.7	105.21	397.7	-	-	9.78	7.3	87.56	65.3	-	-

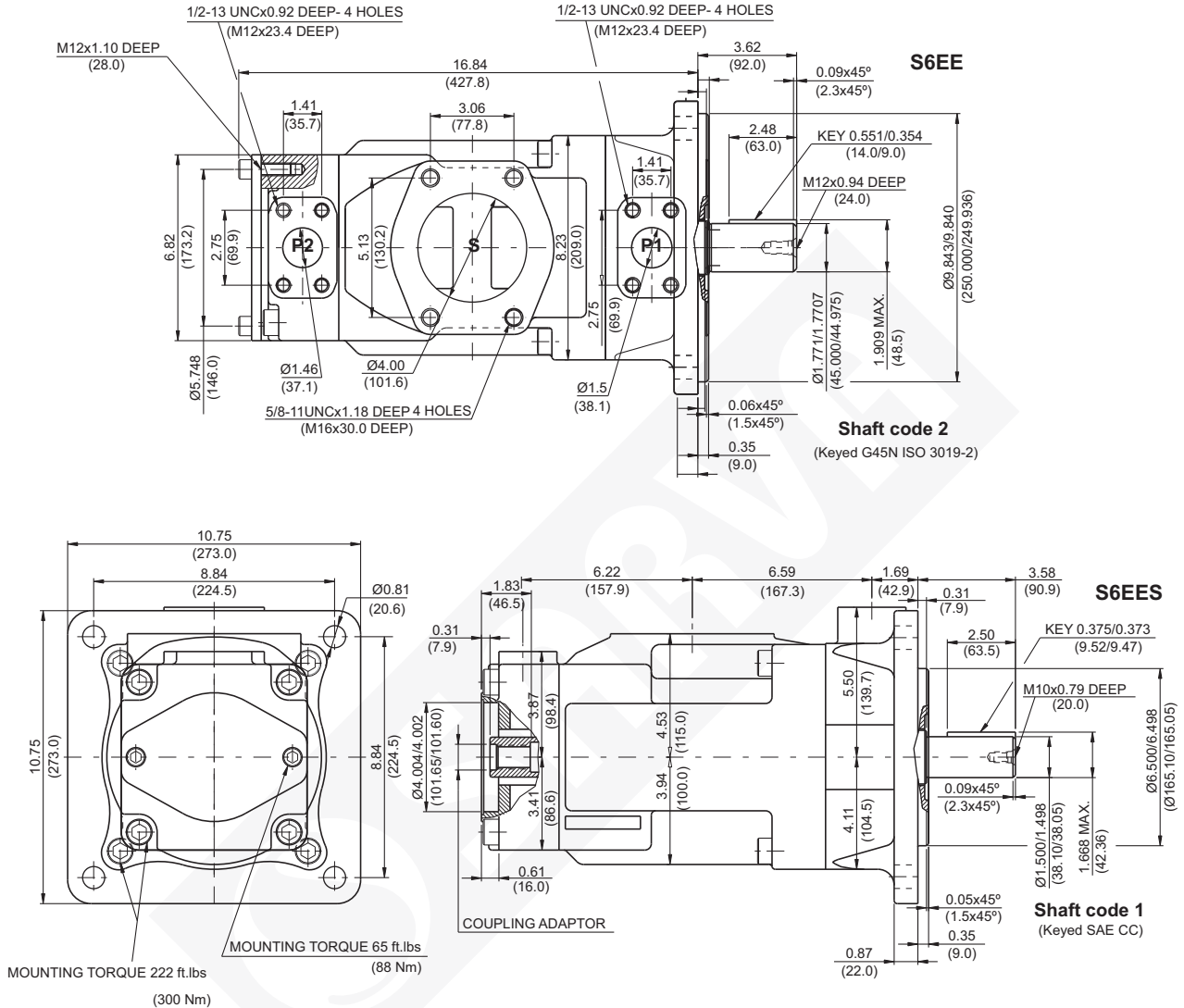
1) 085 = 2000 RPM max.

2) 085 = 75 bar (1100 psi) cont.

085 = 90 bar (1300 psi) max. int.

DIMENSIONS - S6EE / S6EES SERIES

WEIGHT : 95.1 Kg.



Shaft torque limits in ³ /rev x psi (ml/rev x bar)			
Shaft	Vi x p Max.	Copling	Vi x p Max.
1	80053 (90380)	SAE-B	18246 (20600)
2	101506 (114600)	SAE-BB	28937 (32670)

Code	Coupling adaptor
0	Without coupling
2	SAE B -13 teeth -pitch 16/32 Major dia (min) 0.875 (22.225) Minor dia (min.) 0.753 (19.126)
3	SAE BB -15 teeth -pitch 16/32 Major dia (min) 1.00 (25.4) Minor dia (min.) 0.877 (22.275)

Porting Diagrams

