



SARVA HYDRAULIK LLC

ORDERING CODE - S7BS SERIES

S7BS - B09 - 1 R 00 - S 1 M0

Series ————

S7BS series- SAE B 2 bolts
Mounting flange J744C

Camring ————

Volumetric displacement cm³/rev (in³/rev)

| | |
|-------------------|-------------------|
| B02 = 5.7 (0.35) | B09 = 28.0 (1.71) |
| B03 = 9.8 (0.60) | B10 = 31.8 (1.94) |
| B04 = 12.8 (0.78) | B11 = 34.9 (2.13) |
| B05 = 15.9 (0.97) | B12 = 40.9 (2.50) |
| B06 = 19.8 (1.21) | B14 = 45.1 (2.75) |
| B07 = 22.5 (1.37) | B15 = 50.0 (3.05) |
| B08 = 24.9 (1.52) | |

Type of shaft S7BS ————

1 - Keyed (SAE B)
2 - Keyed (ISO R775)
3 - Splined (SAE B)
4 - Splined (SAE BB)

Direction of rotation (view on shaft end) ————

R - clockwise
L - counter-clockwise

Mounting W/connection variables
4 bolts SAE flange (J518C)

| | UNC S7BS | | METRIC S7BS | |
|----------|----------|------|-------------|------|
| | 00 | 01 | M0 | M1 |
| P | 1" | 3/4" | 1" | 3/4" |
| S | 1 1/2" | | | |

Seal class

1 - S1 (for mineral oil)
4 - S4 (for fire resistant fluids)
5 - S5 (for mineral oil and fire resistant fluids)

Design letter

Porting combination
00 - standard

00

S

01

S

02

S

03

S

S - Suction port P - Pressure port

OPERATING CHARACTERISTICS - TYPICAL (24 cST)

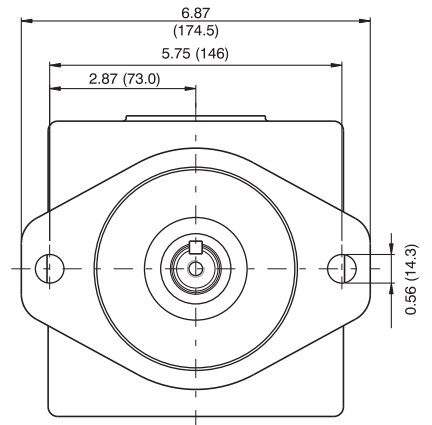
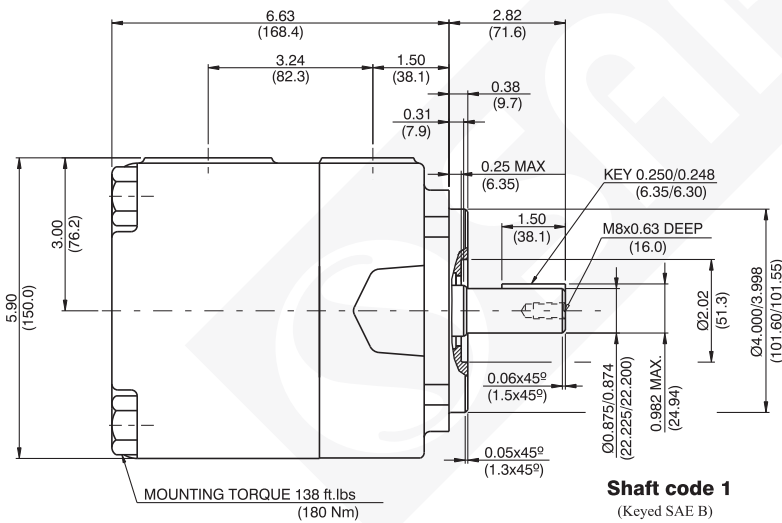
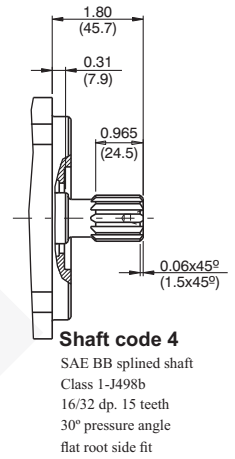
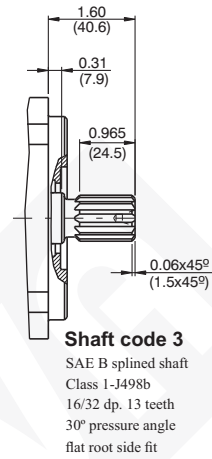
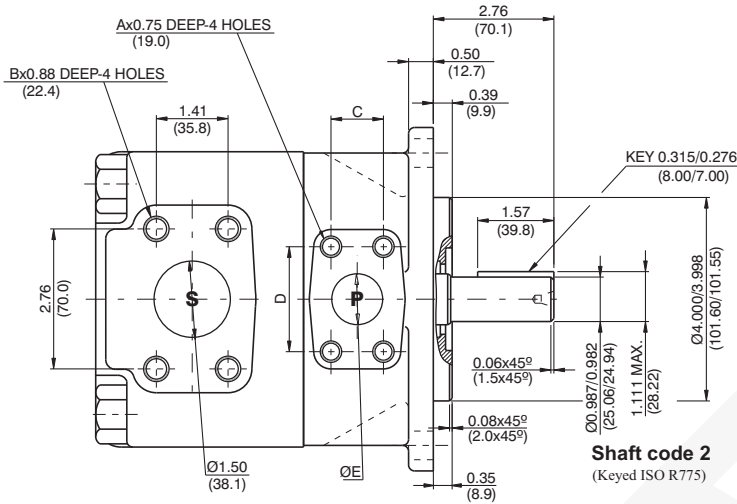
| Pressure port | Series | Volumetric Displacement V _p | | Flow q & n = 1800 rpm | | | | | | Input power p & n = 1800 rpm | | | | | |
|---------------|-------------------|--|----------------------|-----------------------|------|------------------------|------|------------------------|------|------------------------------|------|------------------------|-------|------------------------|-------|
| | | | | p = 0 bar (0 psi) | | p = 140 bar (2000 psi) | | p = 320 bar (4650 psi) | | p = 7 bar (100 psi) | | p = 140 bar (2000 psi) | | p = 320 bar (4650 psi) | |
| | | in ³ /rev | cm ³ /rev | gpm | lpm | gpm | lpm | gpm | lpm | hp | kw | hp | kw | hp | kw |
| S7BS | B02 | 0.35 | 5.7 | 2.76 | 10.4 | 2.33 | 8.8 | 1.73 | 6.5 | 0.74 | 0.55 | 4.02 | 2.99 | 8.59 | 6.40 |
| | B03 | 0.60 | 9.8 | 4.66 | 17.6 | 4.23 | 15.9 | 3.70 | 13.7 | 0.85 | 0.63 | 6.24 | 4.65 | 13.75 | 10.25 |
| | B04 | 0.78 | 12.8 | 6.09 | 23.0 | 5.66 | 21.4 | 5.06 | 19.2 | 0.94 | 0.70 | 7.90 | 5.89 | 17.62 | 13.13 |
| | B05 | 0.97 | 15.9 | 7.56 | 28.6 | 7.13 | 26.9 | 6.53 | 24.7 | 1.02 | 0.76 | 9.62 | 7.17 | 21.62 | 16.12 |
| | B06 | 1.21 | 19.8 | 9.42 | 35.6 | 8.99 | 33.9 | 8.39 | 31.7 | 1.13 | 0.84 | 11.79 | 8.79 | 26.66 | 19.88 |
| | B07 | 1.37 | 22.5 | 10.70 | 40.4 | 10.27 | 38.8 | 9.67 | 36.5 | 1.20 | 0.89 | 13.29 | 9.91 | 30.14 | 22.47 |
| | B08 | 1.52 | 24.9 | 11.84 | 44.7 | 11.41 | 43.1 | 10.81 | 40.9 | 1.27 | 0.94 | 14.62 | 10.90 | 33.24 | 24.78 |
| | B09 | 1.71 | 28.0 | 13.31 | 50.3 | 12.87 | 48.6 | 12.28 | 46.4 | 1.36 | 1.01 | 16.35 | 12.19 | 37.25 | 27.77 |
| | B10 | 1.94 | 31.8 | 15.12 | 57.2 | 14.69 | 55.5 | 14.09 | 53.4 | 1.46 | 1.11 | 18.45 | 13.75 | 42.14 | 31.42 |
| | B11 ¹⁾ | 2.13 | 34.9 | 16.64 | 62.9 | 16.19 | 61.2 | - | - | 1.55 | 1.15 | 20.17 | 15.04 | - | - |
| | B12 ¹⁾ | 2.50 | 40.9 | 19.50 | 73.7 | 19.07 | 72.1 | - | - | 1.72 | 1.28 | 23.55 | 17.56 | - | - |
| | B14 ¹⁾ | 2.75 | 45.1 | 21.40 | 80.8 | 20.95 | 79.2 | - | - | 1.83 | 1.36 | 25.80 | 19.23 | - | - |
| | B15 ¹⁾ | 3.05 | 50.0 | 23.78 | 89.8 | 23.35 | 88.3 | - | - | 1.97 | 1.47 | 28.55 | 21.28 | - | - |

1) B11-B12-B14 = 300 bar (4350 psi) & B15 = 280 bar (4060 psi) max. int. And Max. Speed = 3000 rpm

B02-B10 Peak Pressure 350 bar

DIMENSIONS - S7BS SERIES

WEIGHT : 23.1 Kg.



| Shaft torque limits in ³ /rev x psi (ml/rev x bar) | |
|---|---------------|
| Shaft | Vp x p max. |
| 1 | 14615 (16516) |
| 2 | 18246 (20620) |
| 3 | 18246 (20620) |
| 4 | 18246 (20620) |

| | S7BS | | | |
|-----------|-------------|--------------|-------------|--------------|
| | 00 | 01 | M0 | M1 |
| A | 3/8-16 UNC | | M10 | |
| B | 1/2-13 UNC | | M12 | |
| C | 1.03 (26.2) | 0.874 (22.2) | 1.03 (26.2) | 0.874 (22.2) |
| D | 2.06 (52.4) | 1.874 (47.6) | 2.06 (52.4) | 1.874 (47.6) |
| ØE | 1.00 (25.4) | 0.75 (19.05) | 1.00 (25.4) | 0.75 (19.05) |